



# Accessories for precast walls

**LET'S  
BUILD**

 **RINGER**  
SCAFFOLDING + FORMWORK



## HEADQUARTERS REGAU

### Your reliable partner for scaffolding and formwork.

#### RINGER quality since 1944:

- Flexible and quick solutions
- Absolute reliability
- Personal consultation on site
- Fast customised solutions
- We keep our promises
- With absolute passion
- A real family-run company

### What are we waiting for? Let's build.

Our head office and the heart of the company is the 111.000 m<sup>2</sup> manufacturing and logistic facility based in Regau, Austria. Incorporating worldwide distribution to over 50 countries and providing a centre of excellence for research and development makes RINGER a formidable formwork and scaffolding manufacturer.

With subsidiaries in Slovenia, Croatia, Hungary, Czech Republic and Germany, RINGER provides first class design solutions and on-site supervision for the most complex of projects.

Supporting international customers worldwide makes RINGER the ideal partner for all construction needs.







# RINGER quality for your construction site

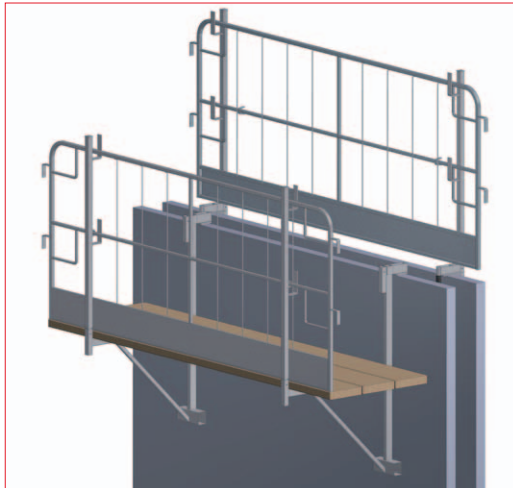
RINGER SYSTEMS ARE SUITABLE FOR ALL CONSTRUCTION PURPOSES, MEET THE HIGHEST QUALITY AND LATEST SAFETY STANDARDS, AND ARE CONSTANTLY BEING FURTHER DEVELOPED.

## Accessories for precast walls

RINGER offers products for construction with precast walls that provide optimum support for the construction progress. Choose your ideal solution from our extensive range:

- Brackets
- Platforms
- Side protection grids
- Push-pull props

# Bracket for precast walls

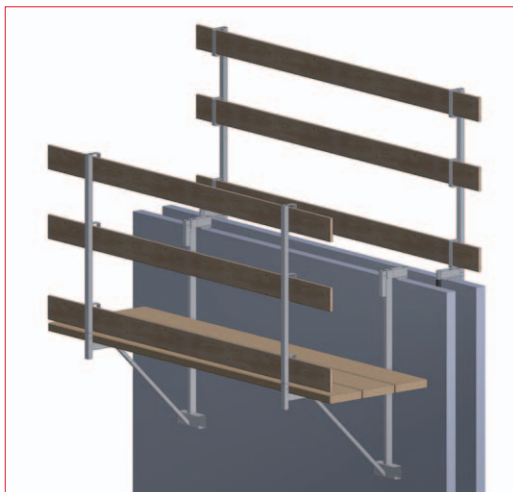


## Ideal for double-shell precast walls

The bracket for precast walls is ideal as a working platform for double-shell precast walls.

Thanks to simple assembly procedures, the bracket is hooked into the wall in a minimum of time. A clamp for the side protection grid creates additional safety on the opposite side.

Both the bracket for precast walls and the guardrail on the opposite side can be optionally equipped with side protection grids or conventional boards.



## Installation set for precast walls

The disposable plastic part helps to easily remove the bracket from the concrete wall.

It can be used with both the bracket and the clamp for precast walls.

# Product features

## > Strong performance

- Max. load capacity to 150 kg/m<sup>2</sup>
- Bracket spacing max. 2.0m
- Scaffolding width 750mm
- Max. web width of the concrete shell 80mm

## > Fast & safe working

- Simply hook into the wall
- Easy removal from the concrete wall thanks to the installation set (disposable plastic part)

## > High cost-effectiveness

- Long service life
- Low storage and transport volume

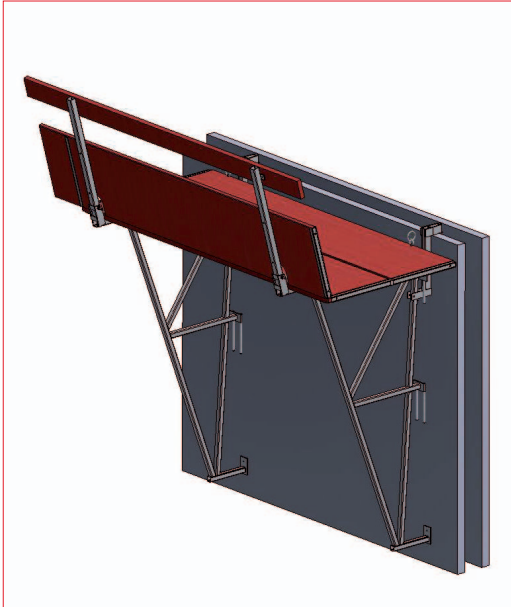
## > Sturdy and weather-resistant

- Hot-dip galvanised steel metal parts

	Art. No.	Description	Weight
1	10001263	Bracket for precast walls	10.90 kg
2	10003054	Railing for concreting bracket	3.90 kg
3	10000430	Clamp for precast walls	2.20 kg
4	10002297	Guardrail post for brackets	3.50 kg
5	10001285	Installation set for precast walls	0.10 kg
	10000872	Side protection grid 2.7m	24.00 kg
	10004510	Side protection grid 1.45m	17.00 kg



# 3S platform for precast walls



## Wide range of applications

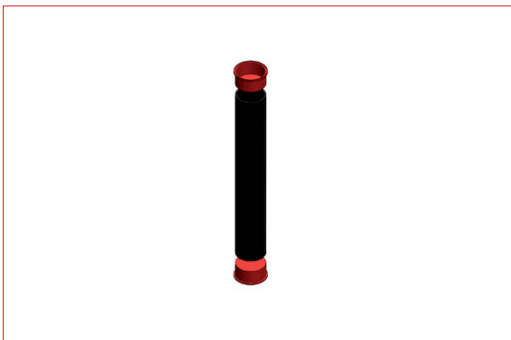
The RINGER 3S platform is an adaptable platform for any application. Simply adjusting the suspension allows the platform to be used for a wide variety of applications. Whether as concreting platform, climbing platform, working scaffolding, protection scaffolding or roof safety barrier.

It is also perfectly suited for use with precast panels and can be used there as a working scaffolding during installation as well as for concreting walls and slabs.



## Suspension shoe for precast walls

The suspension shoe for precast walls turns the Ringer 3S platform into a working scaffolding for double-shell precast walls in no time.



## Installation set for precast walls

The disposable plastic part helps to easily remove the bracket from the concrete wall. It can be used with the bracket for precast walls, with the RINGER 3S platforms as well as with the concreting platform "L".

# Product features

## > Strong performance

- Max. load capacity 200 kg/m<sup>2</sup>
- Bracket spacing max. 2.0m
- Scaffolding width 1.2m
- Max. web width of the concrete shell 80mm

## > Also for use as a working scaffolding

- During assembly and concreting

## > Fast & safe working

- Simply hook into the wall
- Easy removal from the concrete wall thanks to the installation set (disposable plastic part)

## > Sturdy and weather-resistant

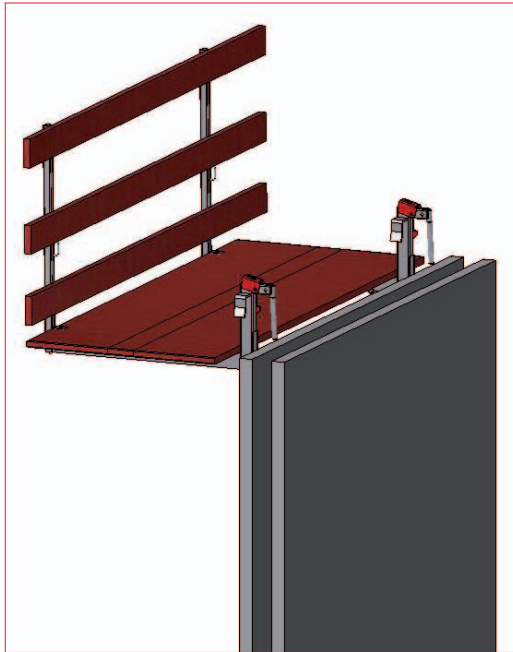
- Hot-dip galvanised metal parts

## > High cost-effectiveness

- Long service life
- Low storage and transport volume

Art. No.	Description	Weight
10003003	3S platform, 2.5m, size 1	125.00 kg
10003004	3S platform, 3.0m, size 2	148.00 kg
10003002	3S bracket	30.50 kg
10004060	3S suspension shoe for precast wall	8.00 kg
10001285	Installation set for precast walls	0.10 kg

# Concreting platform “L”



## Ready to install and independent of systems

The versatile platform can be used with a wide variety of formwork systems as well as with precast walls.

The RINGER concreting platform “L” is delivered to the construction site as a ready-to-assemble unit and can be easily attached to the formwork by crane.

The automatic anti-lift-out protection and the laminated and impregnated wooden platform guarantee maximum safety on the construction site.

Precise workmanship and hot-dip galvanised metal parts ensure a long service life.



## Precast wall adapter

The additionally available precast wall adapter allows the concreting platform “L” to be quickly and easily installed in precast walls.



## Installation set for precast walls

The disposable plastic part helps to easily remove the bracket from the concrete wall. It can be used with the bracket for precast walls, with the RINGER 3S platforms as well as with the concreting platform “L”.



# Product features

## > Strong performance

- Max. load capacity 200 kg/m<sup>2</sup>
- Length 2.70m / width 1.00m
- Low weight: 66kg

## > Wide range of applications

- Suitable for all standard formwork systems
- For all profile widths from 10 to 14cm
- Also for use with precast walls

## > Fast & safe working

- Automatic anti-lift-out protection
- Simply hook in with the crane
- No parts to be lost
- Ready for use in no time

## > Clever product design

- Ready for assembly with foldable railing
- Low stacking height

## > High cost-effectiveness

- Long service life
- Lower storage and transport volume

Art. No.	Description	Weight
10001019	Concreting platform "L", 2.70m, complete	66.00 kg
10002245	Concreting platform "L", 2.70m, with access hatch	66.00 kg
10000212	Precast wall adapter for concreting platform "L"	2.00 kg
10001285	Installation set for precast walls	0.10 kg

# Push-pull props



## Push-pull props for wall support

RINGER push-pull props are available in various sizes, load capacities and designs. Depending on the type, adjustment ranges from 2.15m to 10.0m are possible.

The smooth-running thread makes it quick and easy to set up precast walls or formwork panels.

Depending on the design and size, RINGER push-pull props are available both galvanised and dip-coated.

Different head and foot plates as well as various special sizes are available to meet specific requirements.



## Type overview

	Art. No.	Size	Adjustment- range	Max. compressive load		Max. tensile load
				retracted	extended	
1	10001962	Push-pull prop size 1	2,15 - 3,60m	20,0 kN	11,2 kN	20,0 kN
2	10001961	Push-pull prop size 2	2,35 - 4,10m	20,0 kN	8,7 kN	20,0 kN
3	10001347	Push-pull prop size 3	3,15 - 5,75m	20,0 kN	4,4 kN	20,0 kN
4	10000331	Push-pull prop "S" size 3	3,00 - 5,50m	27,1 kN	11,5 kN	27,1 kN
5	10004256	Push-pull prop "G" size 1	3,55 - 5,90m	30,0 kN	16,2 kN	30,0 kN
6	10001507	Extension for G1	6,20 - 8,40m	20,9 kN	6,3 kN	30,0 kN
7	10000332	Push-pull prop "G" size 2	6,50 - 10,00m	14,2 kN	7,8 kN	30,0 kN

# LET'S BUILD



**RINGER** GmbH

A-4844 Regau  
Römerweg 9  
+43 7672 72711 - 0  
[office@ringer.at](mailto:office@ringer.at)  
[www.ringer.at](http://www.ringer.at)

